



Leos™

Laser Endoscopy Ophthalmic System



Leos

Cleared for Innovation New Glaucoma Surgical Platform



Laser Endoscopy Ophthalmic System

BVI is proud to announce FDA clearance of the next generation Endoscopic Cyclophotocoagulation (ECP) system, Leos™. This novel device has been carefully designed to significantly enhance the ECP procedure for both the surgeon and operating room staff. The portable industrial design of the Leos™ system along with the new, sterile and ready to use, high resolution laser endoscope offers the unique opportunity to efficiently and seamlessly integrate ECP with the cataract procedure.

Single use drapes for the touch screen display facilitate the option of a sterile procedure, controlled by the scrub nurse.

The VueProbe™ laser endoscope delivers a never-seen-before clear, digital, endoscopic view of the intraocular structures, providing consistent clarity and repeatability. The probe features new technological advancements in image orientation, automated focus and illumination adjustments.

Laser energy is deployed using the wireless footswitch and precise treatment is delivered under direct visualization. The visible red aiming beam and targeted ciliary processes are viewed on the 21" "heads-up" display.



Introducing Leos™, the Only Laser Endoscopy System focused on Inflow to:

- Provide the highest level of surgeon's control and precision
- Offer an unmatched customer experience
- Seamlessly integrate into the cataract workflow,

All to enhance minimally invasive patient care options

Leos™ Console

Front View

1 21" VIEWING MONITOR

Displays real-time, 40k pixel, digital endoscopic images, key system parameters, system status icons, and messages.
Monitor can be positioned at surgeon's preferences.

2 TOUCHSCREEN CONTROL MONITOR

Mounted on bi-directional arm that's always within reach. This monitor controls system parameters, HORIZON endoscopic image rotation via a touchscreen and also displays:

- Endoscopic video image
- USB recording Start/Stop
- System status icons
- Messages

3 VUEPROBE HOLDER

4 810 NM DIODE LASER OUTPUT CONNECTOR

5 VIDEO CONNECTOR

6 FOOTSWITCH HOLDER

7 WHEELS



Back View



1 BI-DIRECTIONAL ADJUSTABLE ARM:

Adjusts touchscreen control monitor's position.

2 HANDLEBAR

3 EMERGENCY STOP (E-STOP) BUTTON:

Disables the laser immediately: system switches to Standby status when engaged.
Rotate emergency stop button clockwise to reset.

4 LASER KEY SWITCH

5 REMOTE INTERLOCK:

If installed on a room door, system disables laser if door is opened during treatment

6 USB PORT:

For surgical videos recording and storage

7 HDMI PORT:

Transmits a mirror of viewing monitor when connected to additional/external screen

8 POWER CORD HOLDER

9 POWER SWITCH

10 AC POWER INLET/PORT

Leos™ Console

Wireless Footswitch

- 1 PEDAL**
Laser delivery control
- 2 ROTATION BUTTONS**
Control HORIZON endoscopy image rotation counterclockwise or clockwise
- 3 PAIRING BUTTON**
Enables pairing of a footswitch to a console when pressed
- 4 SHROUD/TOE BAR**
Protects pedal from accidental activation and easy reposition of footswitch



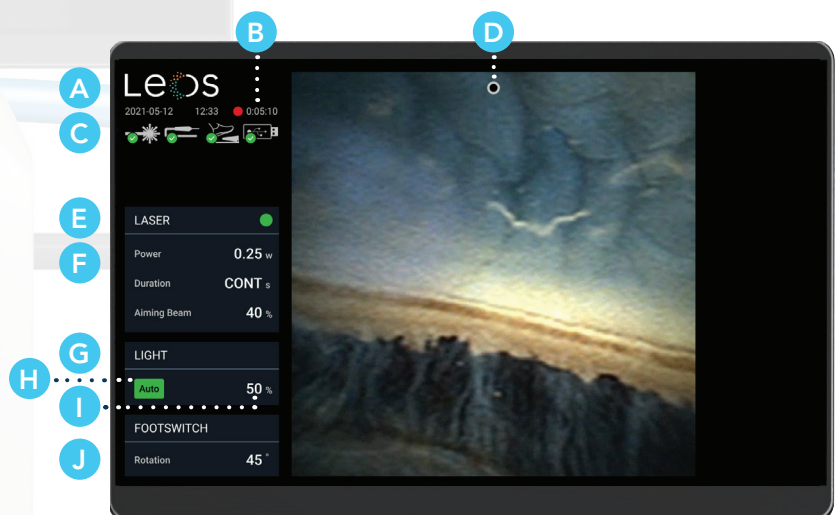
GUI - Touchscreen Control Monitor

- A** DATE AND TIME
- B** STATUS ICONS
- C** SETTINGS MENU BUTTON
- D** LASER ON/OFF TOGGLE
- E** LASER PARAMETER ADJUSTMENTS
BUTTONS: Power, duration and aiming beam
- F** LASER STATUS INDICATOR
- G** ORIENTATION INDICATION (Fixed)
- H** ORIENTATION INDICATOR (Optional)
- I** LIGHT SLIDER
- J** AUTO ILLUMINATION ON/OFF TOGGLE
- K** RECORD START/STOP
- L** ROTATION FRAME
- M** ROTATION BUTTONS



Surgeon Viewing Monitor

- A** DATE AND TIME
- B** RECORDING STATUS
- C** STATUS ICONS
- D** ORIENTATION INDICATOR (Optional)
- E** LASER STATUS INDICATOR
- F** LASER PARAMETERS
- G** LIGHT PARAMETERS
- H** AUTO-ILLUMINATION STATUS INDICATOR
- I** LIGHT BRIGHTNESS LEVEL (Current)
- J** FOOTSWITCH ROTATION SETTINGS

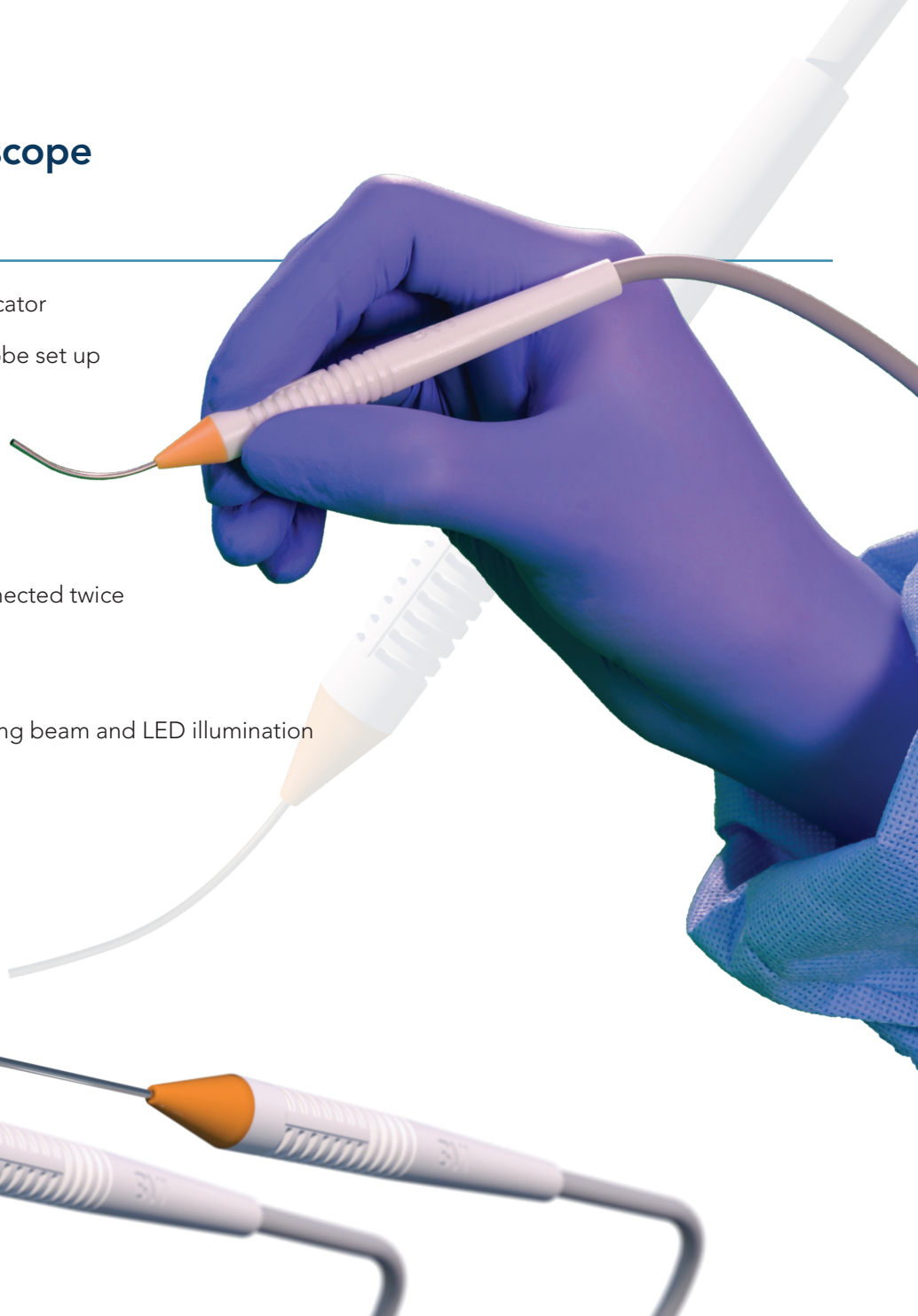


VueProbe

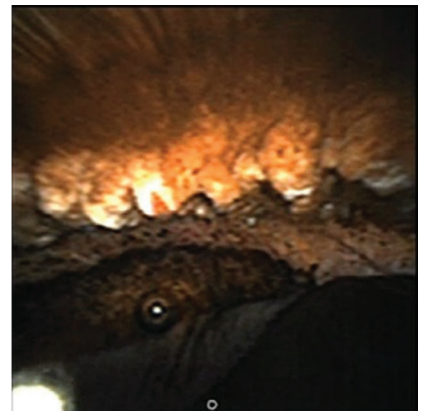
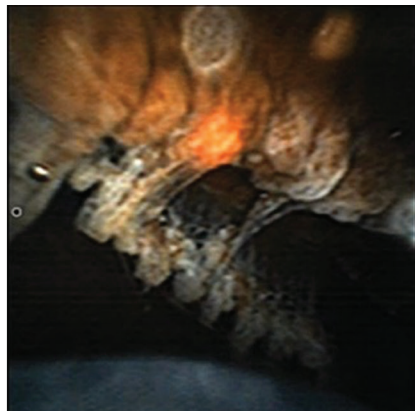
Ophthalmic Laser Endoscope

19G VueProbe features

- Ergonomic handle with orientation indicator
- Sterile, ready to use VueProbe, easy probe set up with console (2 connectors)
- 40K pixel Image resolution
- 30mm Cannula
- Digital image capturing technology
- The probe is single use but can be connected twice to the same Leos™ console
- Autofocus/Auto illumination
- Integrated 810 nm diode laser, red aiming beam and LED illumination
- Range of focus 2 – 10 mm
- 120° wide field of view
- Biocompatible
- 8 ft overall length



ENDOSCOPIC VIEW OF CILIARY PROCESSES
(Cadaver eye)



Reference Numbers and Descriptions



Leos™ Laser Endoscopy System	
SKU #	Description
OME6000U	Leos™ Laser Endoscopy System - Includes footswitch, dust-cover, operator's manual, laser sign, quick start guide, USB, and HDMI cable



Leos™ VueProbe 19G Ophthalmic Laser Endoscope		
SKU #	Description	Packaging
ELP19SU5	VueProbe 19G Ophthalmic Laser Endoscope, straight	5 units/box
ELP19CU5	VueProbe 19G Ophthalmic Laser Endoscope, curved	5 units/box
SD6000	Sterile drape	5 units/box



Accessories	
SKU #	Description
FS6000	Wireless footswitch
AK6000U	Accessory kit
DC6000U	Dust cover
LIT6000U	Literature pack
LG001	Laser Safety Goggles



Contact Information:
www.bvimedical.com/customer-support/