

BVI

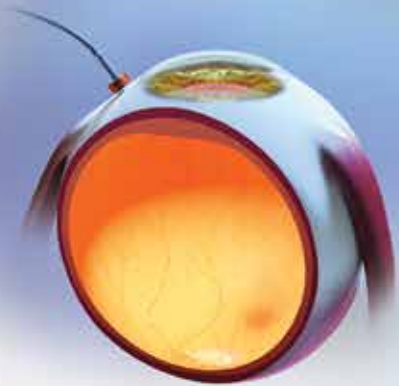
Addressing Control of Light Beam Direction

29G Spotlight Directional Chandelier



Enabling Bimanual Surgery With:

- Directional control of light-beam for enhanced visualization
- 29G valved entry system for straightforward light fiber entrance, fixation and removal
- Stationary and wide field endo-illumination



Patent Pending

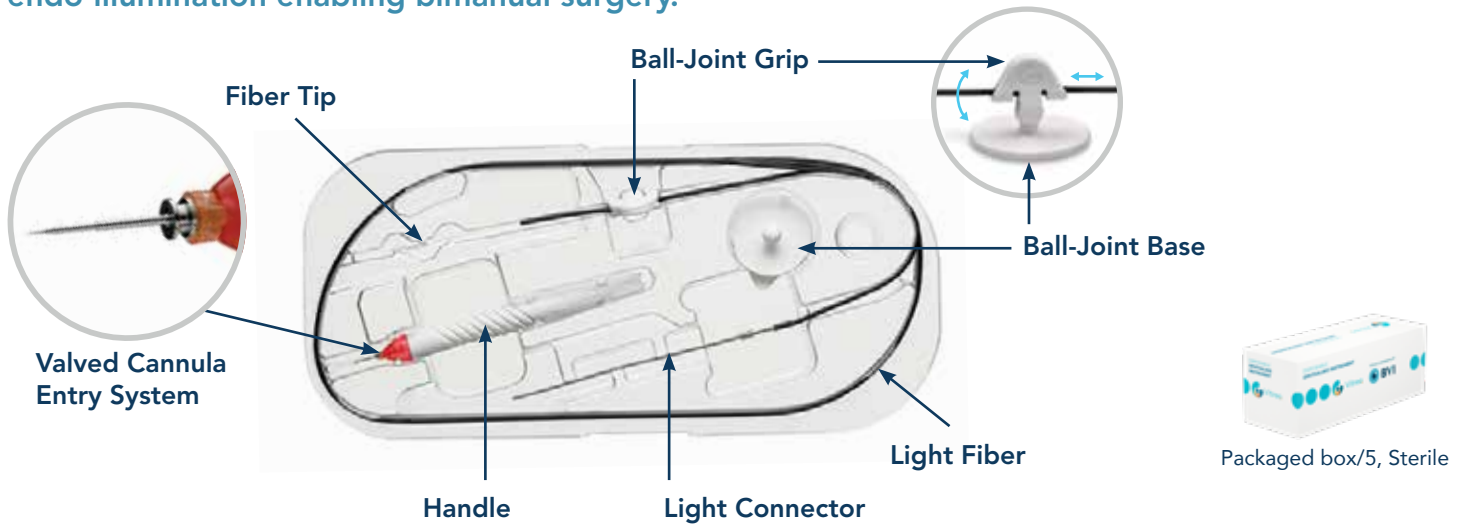
Vitreco

Vitreoretinal Surgical Products

bvimedical.com

29G Spotlight Directional Chandelier

Sets new standards in light beam direction control, it delivers stationary, diffuse wide-field endo-illumination enabling bimanual surgery.



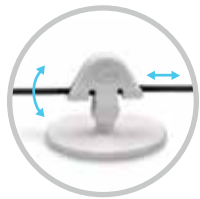
Features and Benefits

Patent Pending



Valved Cannula and Entry System

- Ultra-sharp entry system with integrated scleral marker (3.0 - 4.0 mm)
- Straightforward insertion, fixation and removal of the light fibre
- 29G water-tight and self-sealing incisions



Directional Control System

- Directional control of light beam
- Unique ball-joint mechanism to control light beam direction
- Enables re-orientating light beam direction intraoperatively
- Delivers stationary and wide field endo-illumination



“The Spotlight Directional Chandelier offers an easy and quick insertion in combination with an effective directional control of the light beam.”

— Developed in collaboration with Professor Claus Eckardt



Description	SKU #
29G Spotlight Directional Chandelier; Packaged 5/Bx, Sterile	LF29.D02

Endo-Illumination Brief Statement for VitreQ Spotlight Direction Chandelier:

Indications for Use: VitreQ Disposable 90° Directional Illuminated Laser Probes, Light Fibers and Chandelier are intended for illumination at the light wavelength range of 425nm to 700nm during ophthalmic surgery.

Precautions: Do not use product if package integrity has been breached or compromised; do not use product after the expiration date.

Caution (USA): Federal law restricts this device to sale by or on order of a licensed physician.

Attention: See Instructions for Use included in product packaging for complete listing of indications and warnings.

Light Source Adaptors*	SKU #
Constellation® Light Source Adaptor	LF00.R01
Stellaris® Light Source Adaptor	LF00.R02
Geuder® Light Source Adaptor	LF00.R03
Ruck® Light Source Adaptor	LF00.R04
DORC® Light Source Adaptor	LF00.R05

* All product names, trademarks and registered trademarks are property of their respective owners.

FOR COMPLETE PRODUCT INSTRUCTIONS, PLEASE REFER TO THE BVI IFU OR PRODUCT INSERT

US Tel: 866-906-8080 Fax: 866-906-4304
Email: customersupport@bvimedical.com



BVI and all other trademarks (unless noted otherwise) are property of BVI. BVI ©2021

1577942-03