



Beaver[®] Cataract Knives

Trusted Performance, Precision and Innovation

BVI offers a wide range of Safety and conventional knives for cataract surgery. Beaver Slit, Sideport, Crescent and Micro-Sharp knives come in a wide range of sizes to meet the needs of ophthalmic surgeons.



Beaver[®]
Knives and Blades

bvimedical.com

Beaver[®] Cataract Knives Portfolio



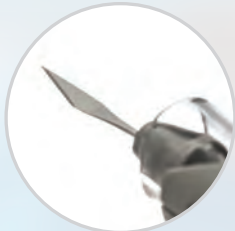
Safety Slit
Single Bevel Knives



Safety Slit
Double Bevel Knives



Safety
Crescent Knives



Safety Sideport
Knives



Safety Kojo
Knives



Slit Knives
Single Bevel Knives



Slit Knives
Double Bevel Knives



Sideport
Knives



MVR
Knives



Micro-Unitome
Knives



Optimum
Knives



Micro-Sharp[®]
Blades

Unprecedented Sharpness and a 15-50% Less Insertion Force That Beats the Competition*

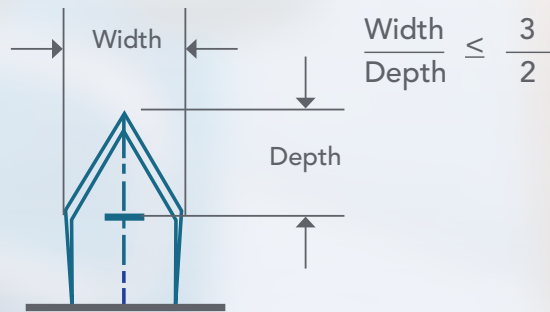
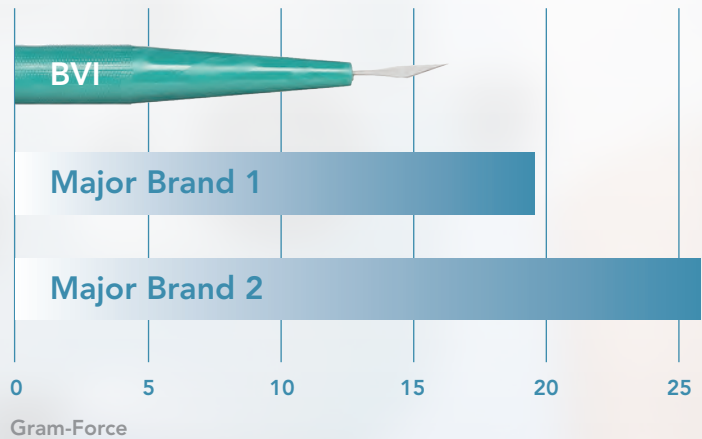
BVI TIP:



Did you know Beaver knives have a depth indicator? The depth indicator represents the tunnel length.



Knife Insertion Force Into Porcine Cornea



Knife Sizes	Reference Line From Tip
1.8 mm and 2 mm	1.75 mm
> 2 mm	2 mm

* Comparison testing performed on leading manufacturers' ophthalmologic slit knife, results available on file at BVI, average values shown.

** Jhanji, V.; Chan E.; Das S.; Zhang H.; Vajpayee, RB. Trypan blue dye for anterior segment surgeries. Eye (2011) 25, 1113-1120.

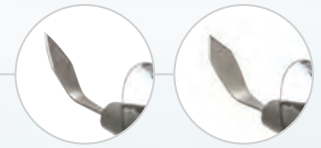
Beaver Knives Are Specialized For the Specific Task at Hand

Brand	Slit/Phaco	Sideports	IOL Insertion
Xstar	✓		
MVR		✓	
Optimum		✓	
Micro-Sharp		✓	
Xstar-Crescent			✓

Cataract Knives Portfolio

Safety Slit Knives

Safety Slit Knives are available in a wide range of sizes designed for penetration and accurate incision width.



378224

Single Bevel

Qty: 10/Bx
Brand: Beaver®

Description	SKU #
1.4 mm Slit, Angled, Single bevel	378214
1.5 mm Slit, Angled, Single bevel	378215
1.7 mm Slit, Angled, Single bevel	378217
1.8 mm Slit, Angled, Single bevel	378218
2 mm Slit, Angled, Single bevel	378220
2.2 mm Slit, Angled, Single bevel	378222
2.4 mm Slit, Angled, Single bevel	378224
2.5 mm Slit, Angled, Single bevel	370145
2.6 mm Slit, Angled, Single bevel	370146
2.75 mm Slit, Angled, Single bevel	378227
2.8 mm Slit, Angled, Single bevel	378228
3 mm Slit, Angled, Single bevel	378230
3.2 mm Slit, Angled, Single bevel	378232



378824

Double Bevel

Qty: 10/Bx
Brand: Beaver®

Description	SKU #
2.2 mm Slit, Angled, Double bevel	378822
2.4 mm Slit, Angled, Double bevel	378824
2.5 mm Slit, Angled, Double bevel	378825
2.65 mm Slit, Angled, Double bevel	378826
2.75 mm Slit, Angled, Double bevel	378827
2.8 mm Slit, Angled, Double bevel	378828
2.85 mm Slit, Angled, Double bevel	378829
3 mm Slit, Angled, Double bevel	378830
3.2 mm Slit, Angled, Double bevel	378832

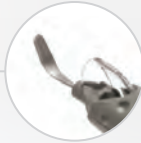


BVI TIP:

Did you know you can...
Blue on the blade to...
incision location**

Safety Crescent Knives

Safety Crescent Knives are angled 55 degrees with the bevel up, designed for optimal tunnel architecture.



378234

Qty: 10/Bx
Brand: Beaver®

Description	SKU #
2.5 mm Crescent, 55 Degrees, Bevel up	378234

Kojo Safety Slit Knives

Kojo Safety Slit Knives are slit blades with an arcuate shape.



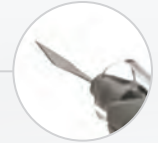
373025

Qty: 10/Bx
Brand: Beaver®

Description	SKU #
2.5 mm Kojo Slit, 45 Degrees, Arc height is 0.55 mm	373025
3.2 mm Kojo Slit, 45 Degrees, Arc height is 0.71 mm	373032

Optimum Safety Sideport Knives

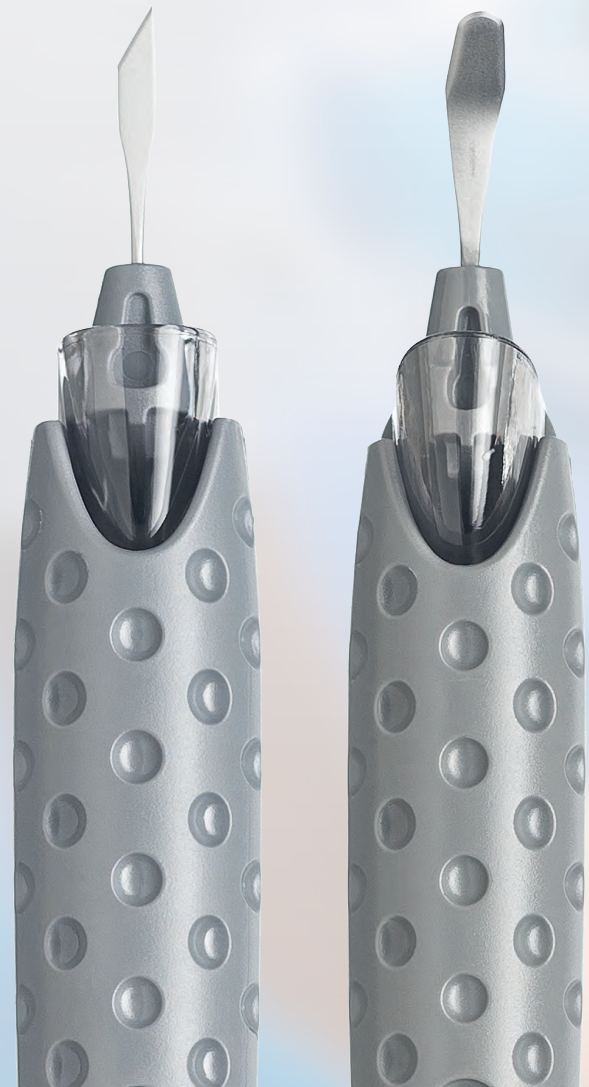
Safety Sideport Knives are designed for stab incisions.



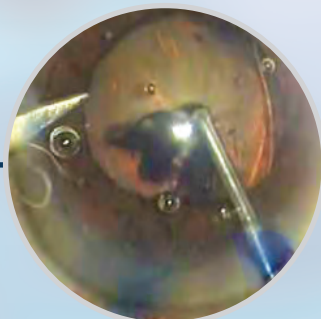
378235

Qty: 10/Bx
Brand: Beaver®

Description	SKU #
15 Degree Sideport, Straight	378235
22.5 Degree Sideport, Straight	378236
30 Degree Sideport, Straight	378237
45 Degree Sideport, Straight	378238



an drip Trypan
o help mark



Slit Knives

Slit Knives are available in a wide range of sizes designed for penetration and accurate incision width.



373727

Single Bevel

Qty: 10/Bx
Brand: Beaver®

Description	SKU #
1.8 mm Slit, 45 Degrees, Single bevel up	373718
2.2 mm Slit, 45 Degrees, Single bevel up	373722
2.4 mm Slit, 45 Degrees, Single bevel up	373724
2.5 mm Slit, 45 Degrees, Single bevel up	373725
2.6 mm Slit, 45 Degrees, Single bevel up	373726
2.75 mm Slit, 45 Degrees, Single bevel up	373727
2.8 mm Slit, Straight, Matte	373328
2.8 mm Slit, 45 Degrees, Single bevel up	373728
3 mm Slit, Straight, Matte	373330
3 mm Slit, 45 Degrees, Single bevel up	373730
3.2 mm Slit, Straight, Matte	373332
3.2 mm Slit, 45 Degrees, Single bevel up	373732

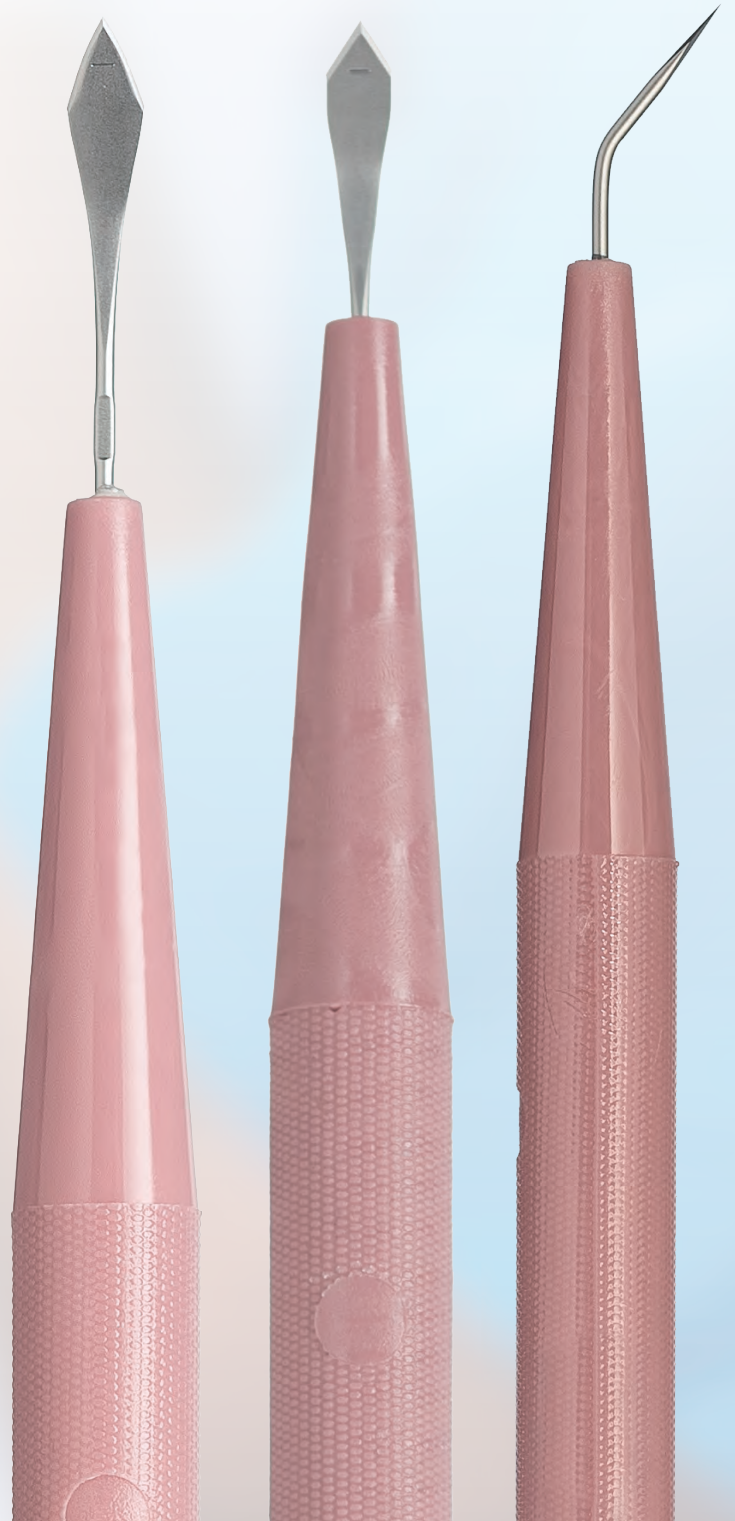


370824

Double Bevel

Qty: 10/Bx
Brand: Beaver®

Description	SKU #
2 mm Slit, 45 Degrees, Double bevel up	370820
2.2 mm Slit, 45 Degrees, Double bevel up	370822
2.4 mm Slit, 45 Degrees, Double bevel up	370824
2.5 mm Slit, 45 Degrees, Double bevel up	370825
2.65 mm Slit, 45 Degrees, Double bevel up	370826
2.75 mm Slit, 45 Degrees, Double bevel up	370827
2.8 mm Slit, 45 Degrees, Double bevel up	370828
3 mm Slit, 45 Degrees, Double bevel up	370830



Cataract Knives Portfolio

Optimum Knives

Optimum Knives are color coded for identification. Offered in a wide range of sizes.

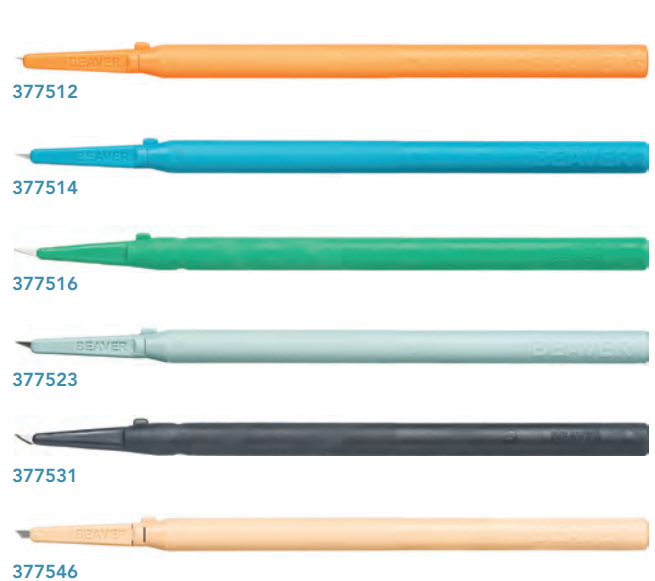


Qty: 10/Bx
Brand: Beaver®

Description	SKU #
15 Degrees, 30 Degree bend left	374890
15 Degrees, Straight, Green	374891
22.5 Degrees, Straight, Slate blue	374892
30 Degrees, Straight, Black	374893
45 Degrees, Straight, Tan	374894

Micro-Unitome Knives

Micro-Unitome Knives are manufactured using a proprietary grindless technology to support a more consistent sharpness. Each knife is color coded for identification.



Qty: 10/Bx
Brand: Beaver®

Description	SKU #
1.5 mm, 15 Degrees, Orange	377512
3 mm, 15 Degrees, Blue	377514
5 mm, 15 Degrees, Green	377516
4 mm, 22.5 Degrees, Light blue	377523
3.5 mm, 30 Degrees, Black	377531
3 mm, 45 Degrees, Tan	377546



FOR COMPLETE PRODUCT INSTRUCTIONS, PLEASE REFER TO THE BVI IFU OR PRODUCT INSERT

Sideport Knives

Sideport Knives are designed for accurate width stab incisions.



373712

Qty: 10/Bx
Brand: Beaver®

Description	SKU #
1 mm Sideport Knife, Angled	373710
1.2 mm Sideport Knife, Angled	373712

EdgeAhead Sideport and MVR



585232



376620



376630

Qty: Various/Bx
Brand: Beaver®

Description	SKU #
0.6 mm Stiletto, 5/Bx	585232
0.6 mm MVR, Straight, 5/Bx	585231
1.1 mm MVR, Straight, 5/Bx	585240
1.15 mm MVR, 20G, Straight, 10/Bx	376630
1.15 mm Sideport MVR, Angled, 10/Bx	376620

Micro-Sharp® Blades

Micro-Sharp Blades are manufactured using a proprietary grindless technology. Each blade is color coded for identification.



377511



377513



377515



377522



377530



Qty: 6/Bx
Brand: Beaver®

Description	SKU #
1.5 mm, 15 Degrees, Orange	377511
3 mm, 15 Degrees, Blue	377513
5 mm, 15 Degrees, Green	377515
4 mm, 22.5 Degrees, Light blue	377522
3.5 mm, 30 Degrees, Black	377530

