

# IPure® 1-Piece User Guide B1PY/B1PC

## Injector Handling and Implantation Steps

Handling Shown Below is for Illustration Purposes Only

### Step A



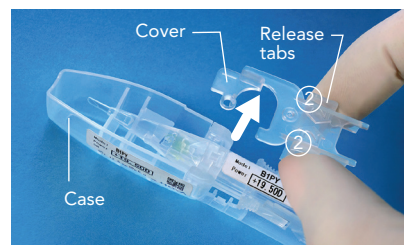
- Pull the injector out of the pouch by holding the handling tab.

### Step B



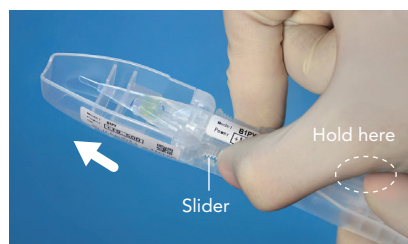
- Infuse the OVD into the injector through the infusion port with the cannula pointed in a direction perpendicular to the body.
- Fill up the area indicated by dotted lines with the OVD and confirm that the OVD has reached the entire optic.

### Step C



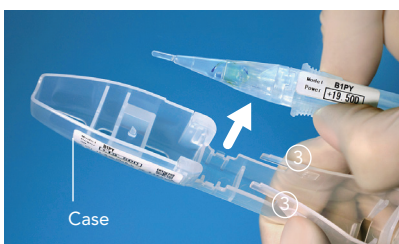
- Press the release tabs, lift up and remove the cover from the case.

### Step D



- While fixating the injector body with the thumb of one hand, advance the slider with the other hand until it stops.

### Step E



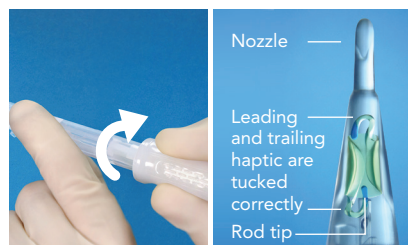
- Remove the injector from the case. Go immediately to the next step once removed.

### Step F



- Push the injector knob forward until it stops.

### Step G



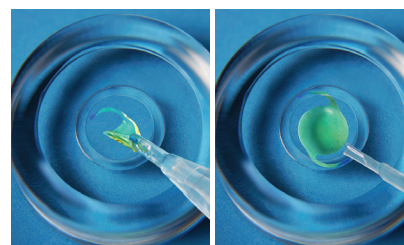
- Slowly rotate the knob clockwise. Pay special attention that the trailing haptic is tucked correctly as the rod advances to the back edge of the optic.
- As the lens advances further confirm that the leading and trailing haptic are tucked correctly, and that the rod tip pushes the edge of the optic in the center.

### Step H



- Carefully insert the injector tip into the eye through the incision, keeping the slit of the tip in a downward position to ensure correct IOL orientation.
- Slowly rotate the injector knob clockwise, to inject the lens into the capsular bag. No rotation of the injector is required.

### Step I



- Make sure that the trailing haptic has been released completely from the tip, and then pull out the injector from the incision.
- Adjust the position of the lens, using a hook or other instrument.

FOR COMPLETE PRODUCT INSTRUCTIONS, PLEASE REFER TO THE BVI IFU OR PRODUCT INSERT